

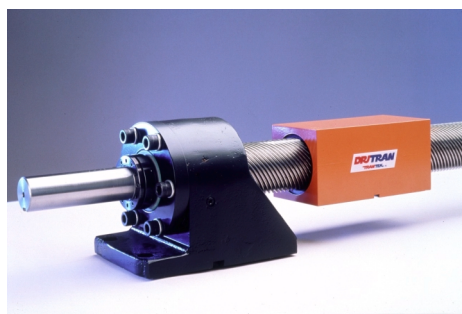
## HSD2763 High Speed Drive

One complete HSD2763 High Speed Drive system consists of one DriTran epoxy composite nut, three TranTek drive screws, two standoffs and supports for each end. After considering all design criteria, use the ordering guide below to determine your standard part number. First, enter a three-digit *index length*, and then enter the letter that corresponds to your desired standard *mounting nut style*.

### Typical Applications

- Heavy duty machine loading, unloading, and palletizing
- Long distance gantry systems and robot shuttles
- High speed industrial processing equipment

Specifications:	
<b>Major Diameter</b>	2.750"
<b>Minor Diameter</b>	2.535"
<b>Screw Lead</b>	6.00"
<b>Thread Starts</b>	24
<b>Thread Flank Angle</b>	22.5°
<b>Nut Length</b>	8.0"
<b>Load Surface Area</b>	32.1in <sub>2</sub>

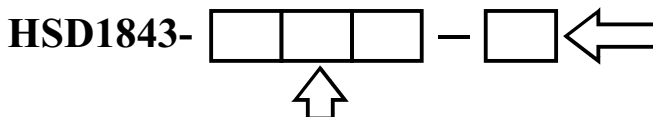


### Optional Length Characteristics

Available Index *	Threaded Screw Length	Unsupported Screw Length	Total Screw Length	Critical R.P.M.	Critical Speed (ips)
192"	209.56"	70.31"	223.94"	1953	195
216"	233.56"	78.31"	247.96"	1574	157
240"	257.56"	86.31"	271.94"	1296	130
264"	281.56"	94.31"	295.94"	1085	109
288"	305.56"	102.31"	319.94"	922	92
312"	329.56"	110.31"	343.94"	793	79
336"	353.56"	118.31"	367.94"	690	69
360"	377.56"	126.31"	391.94"	605	61

\* Note: Standard Index lengths are available from 192" to 360" in 6" increments.  
 \* Extra room is available for shocks, bumpers, hard stops, or other design considerations

### Ordering Guide



Enter a three-digit index length. For example, for a 192" index length enter "192". Note: All index lengths are available from 192" to 360" in 6" increments.

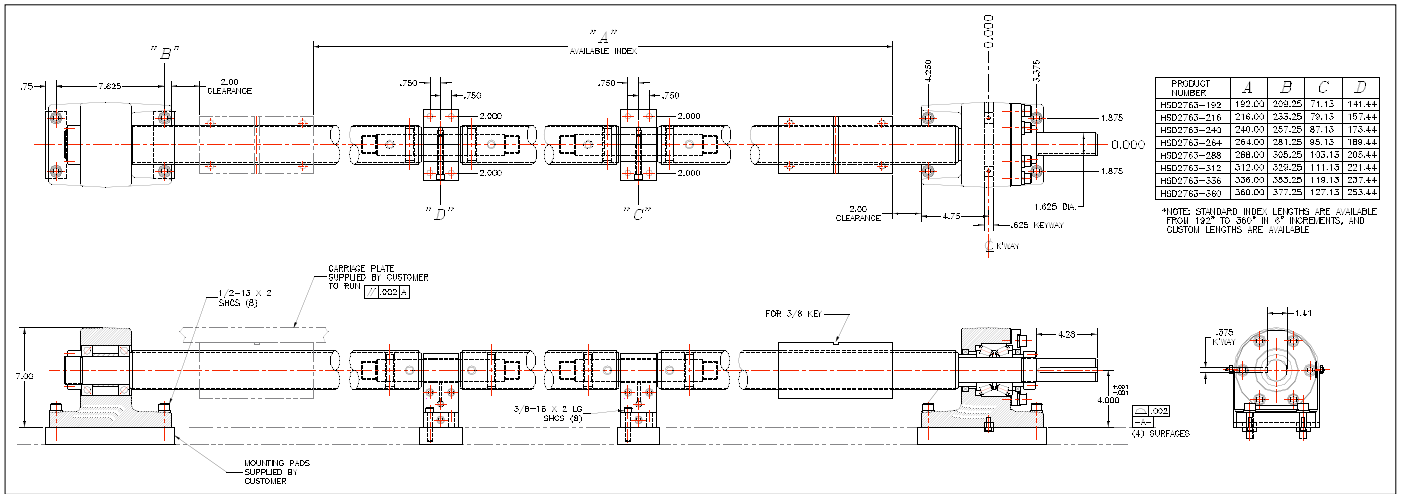
Mounting Nut Style

B = Block  
F = Foot

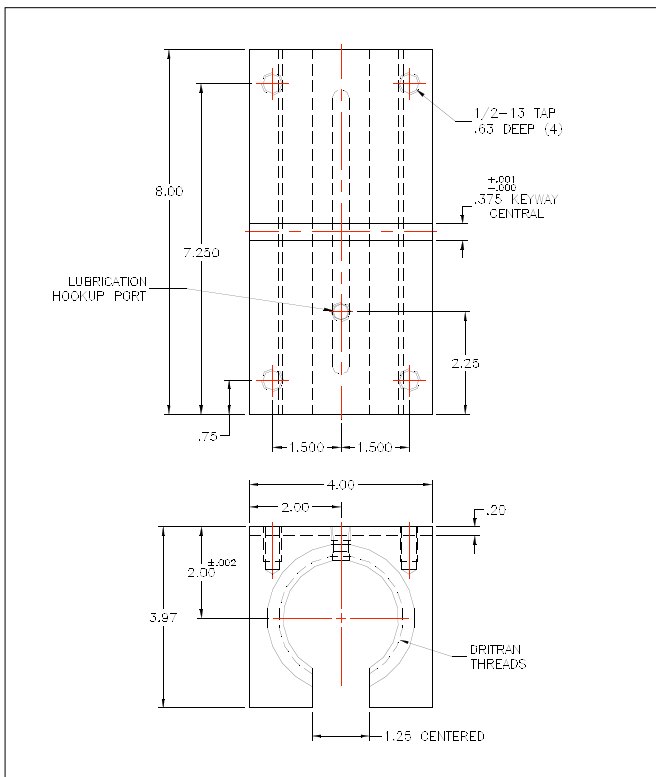
Refer to drawings on previous page.

# HSD2763

## Standard Layout (Base Nut Shown)



**Base Nut**



**Foot Nut**

