

HSD2762 High Speed Drive

One complete HSD2762 High Speed Drive system consists of one DriTran epoxy composite nut, two TranTek drive screws, one standoff and supports for each end. After considering all design criteria, use the ordering guide below to determine your standard part number. First, enter a three-digit *index length*, and then enter the letter that corresponds to your desired standard *mounting nut style*.

Typical Applications

- Heavy duty machine loading, unloading, and palletizing
- Long distance gantry systems and robot shuttles
- High speed industrial processing equipment

Specifications:	
Major Diameter	2.750"
Minor Diameter	2.535"
Screw Lead	6.00"
Thread Starts	24
Thread Flank Angle	22.5°
Nut Length	8.0"
Load Surface Area	32.1in ₂



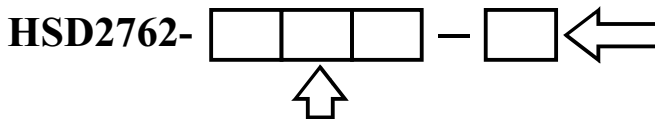
Optional Length Characteristics

Available Index *	Threaded Screw Length	Unsupported Screw Length	Total Screw Length	Critical R.P.M.	Critical Speed (ips)
96"	113.56"	57.41"	127.94"	4218	422
120"	137.56"	69.41"	151.94"	2886	289
144"	161.56"	81.41"	175.94"	2098	210
168"	185.56"	93.41"	199.94"	1593	159
192"	209.56"	105.41"	223.94"	1251	125
216"	233.56"	117.41"	247.94"	1008	101
240"	257.56"	129.41"	271.94"	830	83

Note: Standard Index lengths are available from 96" to 240" in 6" increments.

* Extra room is available for shocks, bumpers, hard stops, or other design considerations

Ordering Guide



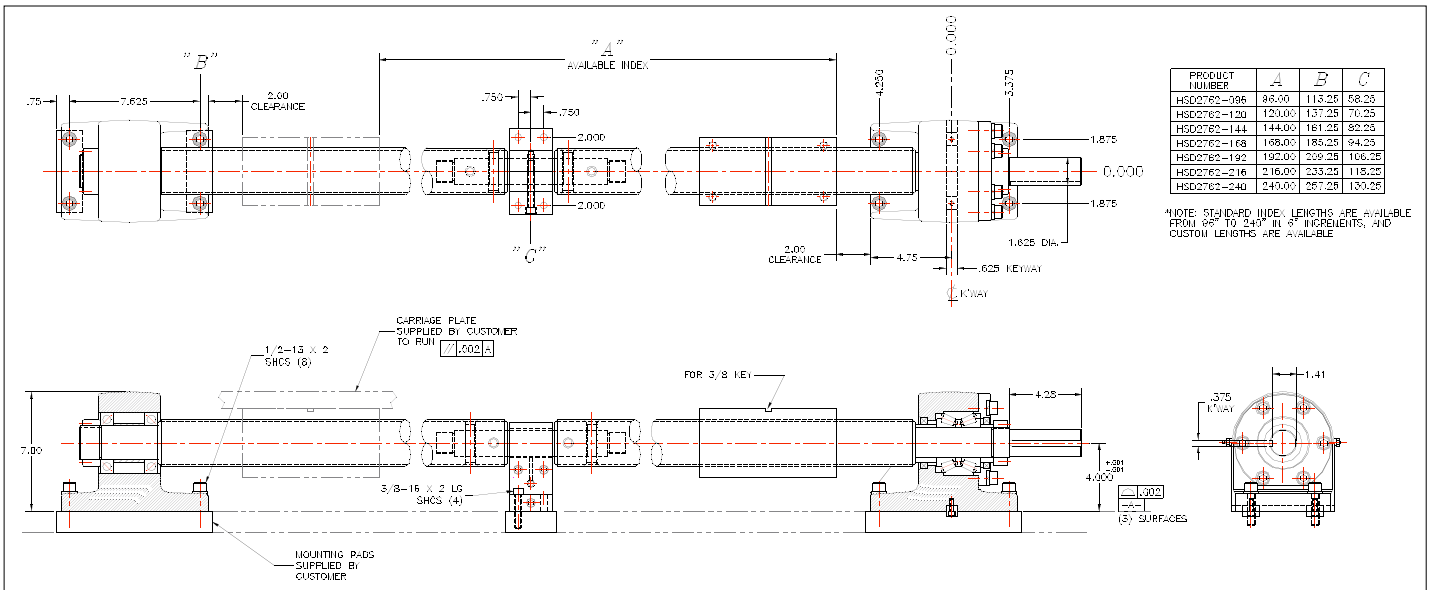
Enter a three-digit index length. For example, for a 96" index length enter "096". Note: All index lengths are available from 96" to 240" in 6" increments.

Mounting Nut Style
B = Block F = Foot

Refer to drawings on previous page.

HSD2762

Standard Layout (Base Nut Shown)



Base Nut

Foot Nut

