

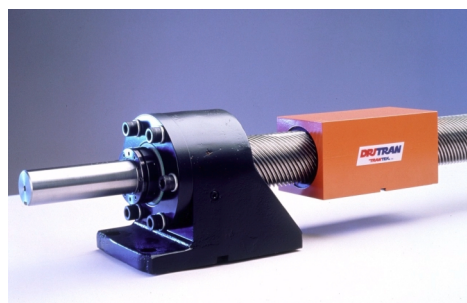
HSD2761 High Speed Drive

One complete HSD2761 High Speed Drive system consists of one DriTran epoxy composite nut, one TranTek Drive Screw and supports for each end. After considering all design criteria, use the ordering guide below to determine your standard part number. First, enter a three-digit *index length*, and then enter the letter that corresponds to your desired standard *mounting nut style*.

Typical Applications

- Heavy duty machine loading, unloading, and palletizing
- Long distance gantry systems and robot shuttles
- High speed industrial processing equipment

Specifications:	
Major Diameter	2.750"
Minor Diameter	2.535"
Screw Lead	6.00"
Thread Starts	24
Thread Flank Angle	22.5°
Nut Length	8.0"
Load Surface Area	38.1in ₂

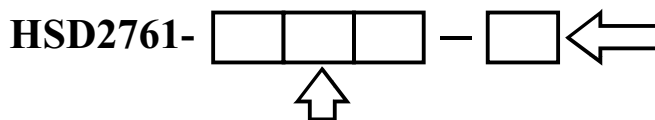


Optional Length Characteristics

Available Index *	Threaded Screw Length	Unsupported Screw Length	Total Screw Length	Critical R.P.M.	Critical Speed (ips)
36"	53.56"	54.81"	67.94"	7167	717
42"	59.56"	60.81"	70.94"	5822	582
48"	65.56"	66.81"	79.94"	4824	482
54"	71.56"	72.81"	85.94"	4061	406
60"	77.56"	78.81"	91.94"	3467	347
66"	83.56"	84.81"	97.94"	2993	299
72"	89.56"	90.81"	103.94"	2611	261
78"	95.56"	96.81"	109.94"	2297	230
84"	101.56"	102.81"	115.94"	2037	204
90"	107.56"	108.81"	121.94"	1819	182
96"	113.56"	114.81"	127.94"	1633	163
102"	119.56"	120.81"	133.94"	1475	148
108"	125.56"	126.81"	139.94"	1339	134

* Extra room is available for shocks, bumpers, hard stops, or other design considerations

Ordering Guide



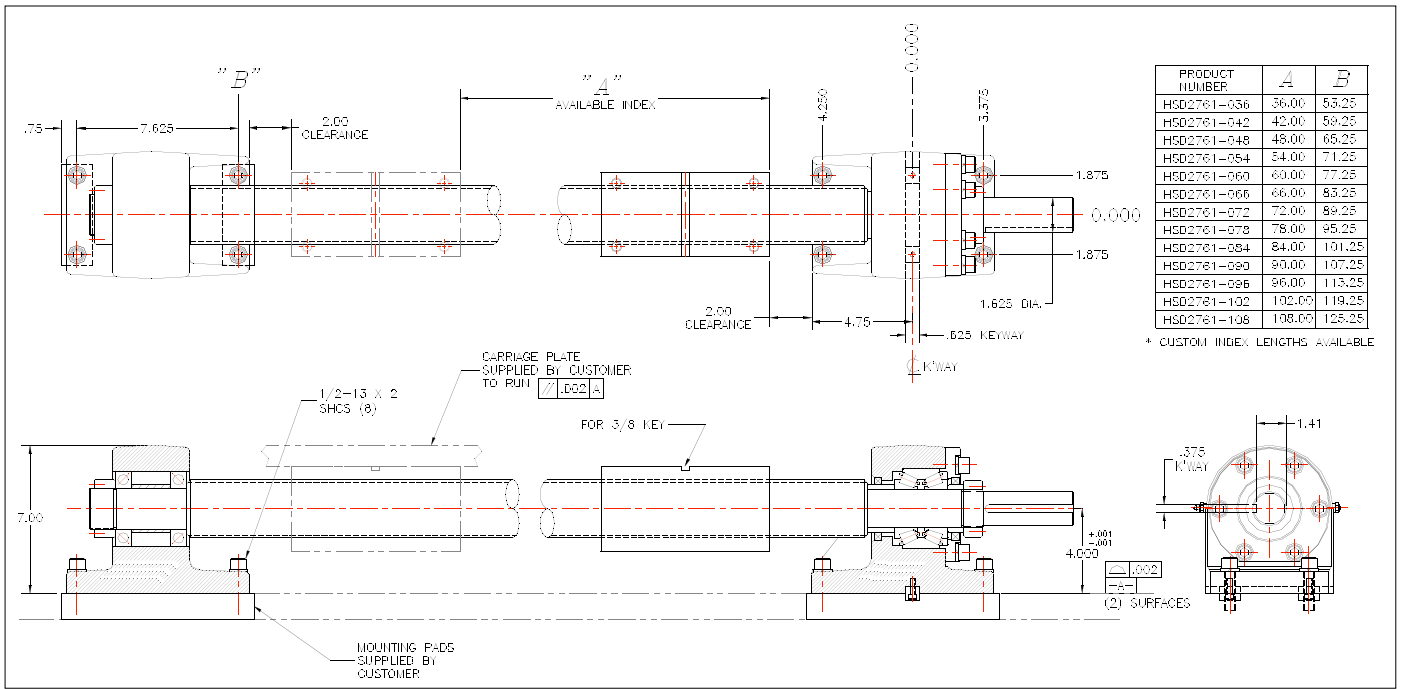
Enter a three-digit index length. For example, for a 36" index length enter "036". For available index lengths, see *optional length characteristics* table, above.

Mounting Nut Style
B = Base F = Foot

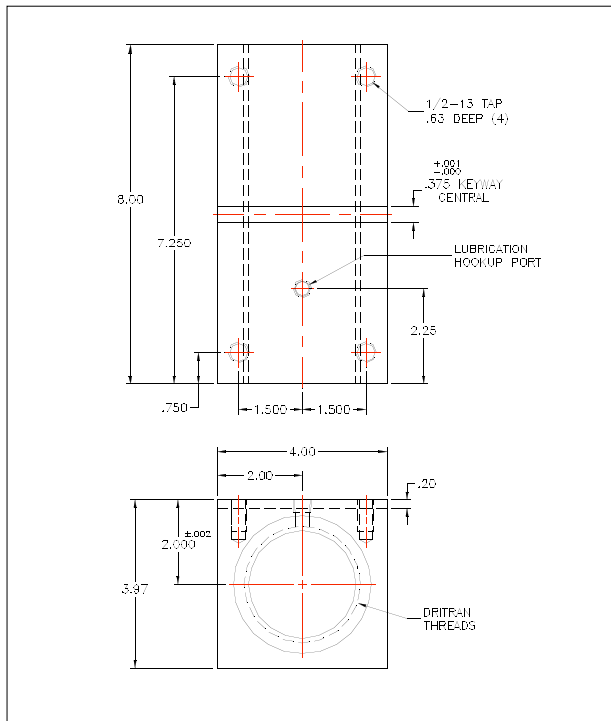
Refer to drawings on previous page.

HSD2761

Standard Layout (Base Nut Shown)



Base Nut



Foot Nut

