

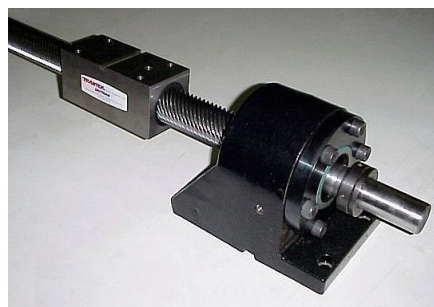
HSD1842 High Speed Drive

One complete HSD1842 High Speed Drive system consists of one DriTran epoxy composite nut, two TranTek drive screws, one standoff and supports for each end. After considering all design criteria, use the ordering guide below to determine your standard part number. First, enter a three-digit *index length*, and then enter the letter that corresponds to your desired standard *mounting nut style*.

Typical Applications

Medium to heavy duty industrial processing
Horizontal and vertical axis material handling equipment
Automatic machine operation systems

Specifications:	
Major Diameter	1.875"
Minor Diameter	1.643"
Screw Lead	4.00"
Thread Starts	16
Thread Flank Angle	22.5°
Nut Length	6.5"
Load Surface Area	18.8in ₂



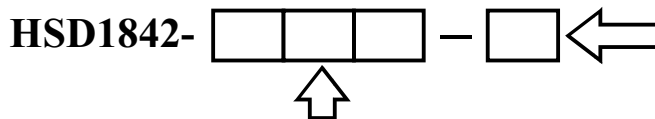
Optional Length Characteristics

Available Index *	Threaded Screw Length	Unsupported Screw Length	Total Screw Length	Critical R.P.M.	Critical Speed (ips)
96"	112.06"	56.65"	124.94"	2807	187
120"	136.06"	68.65"	148.94"	1911	127
144"	160.06"	80.65"	172.94"	1385	92
168"	184.06"	92.65"	196.94"	1049	70
192"	208.06"	104.65"	220.94"	823	55
216"	232.06"	116.65"	244.96"	662	44
240"	256.06"	128.65"	268.94"	544	36

Note: Standard Index lengths are available from 96" to 240" in 6" increments.

* Extra room is available for shocks, bumpers, hard stops, or other design considerations

Ordering Guide



Enter a three-digit index length. For example, for a 96" index length enter "096". Note: All index lengths are available from 96" to 240" in 6" increments.

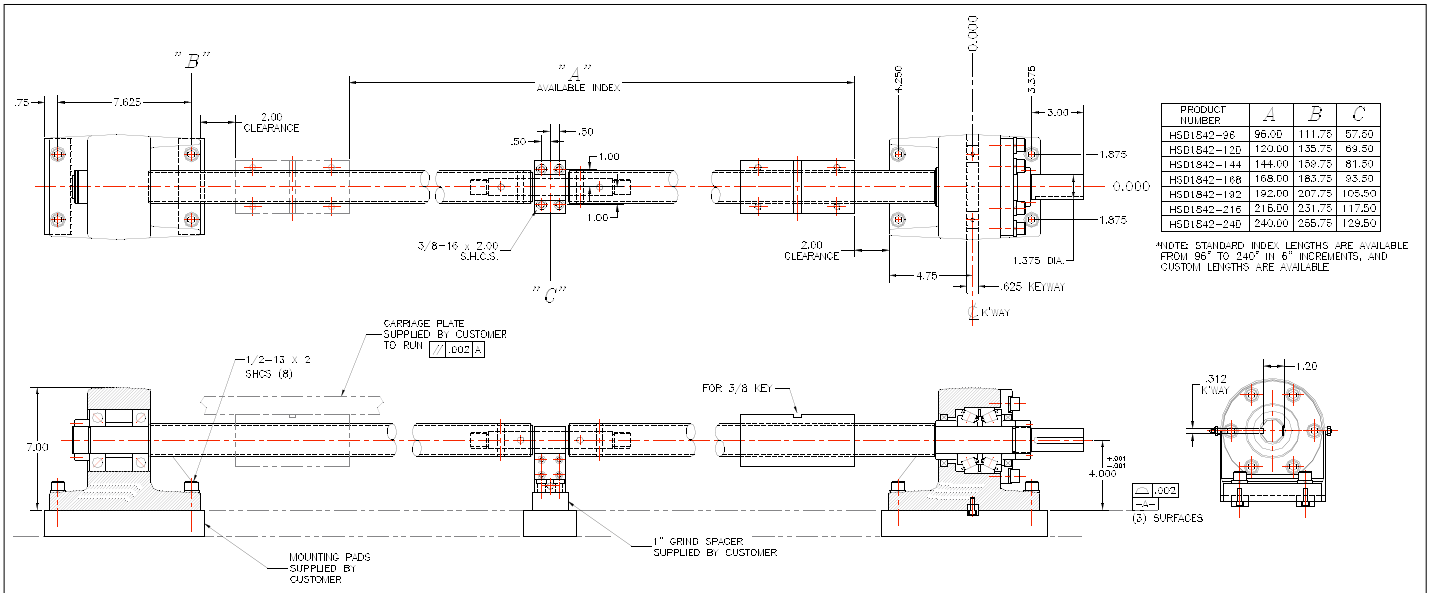
Mounting Nut Style

B = Block
F = Foot

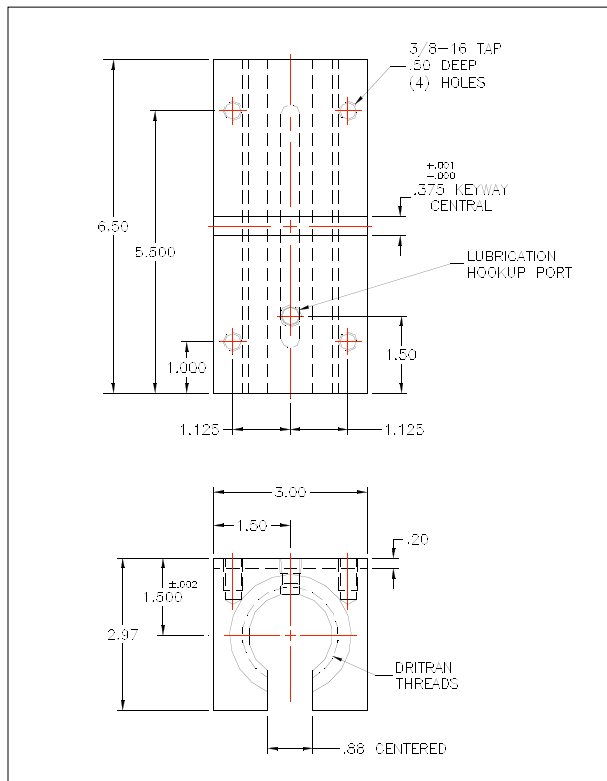
Refer to drawings on previous page.

HSD1842

Standard Layout (Base Nut Shown)



Base Nut



Foot Nut

